

SCANNING

A presentation for The FortMac Users Group
<http://fortmac.org/>



FORT MAC USER GROUP

FORT COLLINS, CO

Some items from the web site

<http://www.scantips.com/>

Also a very handy scanning reference.

There are over 900 pages of information about scanning.

As the author, **Wayne Fulton** says;

The purpose is to offer some scanning tips and to explain the basics for photos and documents. It is about the fundamentals of digital images, about the basics to help you get the most from your scanner. **How it works, for those that want to know.**

POINTS TO BE COVERED HERE.

- * Scanning for “Paperless” office/home.
 - * Quality of original
 - * Just copying for archiving
 - * Stitching/Merging scans
 - * Readable
 - * OCR Accuracy
 - * Searchable text, PDF

Never used a scanner before?

Types of scanners

- * Flatbed
 - * All-In-One printer
 - * Dedicated
- * Sheet feeder
 - * Single sheet
 - * Multiple sheets
 - * Double sided sheets
- * Portable, Hand scanner
- * Business card reader
 - * Scanner
 - * Photo
- * Slide scanner
- * Negative scanner
- * Camera, iPhone and iPad

FLATBED SCANNER

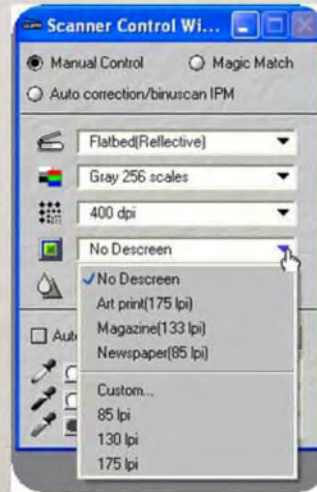
The flatbed scanner is very much like a copy machine, to the extent that it has a glass plate under a lid, and a moving light that scans across under it. Except that scanners can do great color too, and have more controls possible. And like a copy machine, a flatbed scanner allows you to scan photos, paper documents, books, magazines, large maps, or even 3-dimensional objects (those that don't have a lot of depth, coins for example), etc. It scans very much like a copy machine. But instead of creating another piece of paper like a copy machine does, we instead create an image in memory, which we can do with as we please. We have acquired a digital image, and we can show it on the screen, or write a file and email it, or print it, anything we wish.

**Is the quality of the original worth
scanning?**

Do you really want this one?



DESCREEN?



DESCREEN

- If scanning an image from a magazine, newspaper or some other form of print you may need to apply a Descreen, which allow you to remove the moiré pattern. (A moiré is an undesirable pattern in printing that results from incorrect screen angles of overprinting halftones.)
- Select the appropriate Descreen from the dropdown menu located next to the icon.
- Note: Descreen should not be used when scanning photos.

DESCREEN

- Descreening is a way to optimize your scan by altering the LPI (Lines Per Inch) at which you scan. There are 3 main descreening settings. These are only guidelines, use your scanning software to tweak these settings. Experiment, have fun, make your own rules.
- Here are the settings:
- Magazines - should be scanned at 133 lines per inch. This smoothes the dot pattern found in glossy magazines.
- Newspaper photos - should be scanned at 85 lines per inch, This smoothes the coarse grain pattern commonly found in newspaper images.
- Art prints - are scanned at 175 lines per inch. This smoothes the fine dot pattern found in high quality art prints.

DESCREEN

- ☼ How do you descreen a photo that is being scanned from a yearbook? Do you need a special program?
- ☼ Simple, go to your Filter menu Look for Blurs, find Gaussian Blur. Using a Radius of 1 to 1.5 pixels you should be able to descreen your image appropriately.
- ☼ Then under the Filters menu look for Sharpen. Sharpen once and if you feel a slight more sharpening is needed then use Sharpen More...

DESCREEN

Without



With



We can clean, repair and modify scans.

600 DPI, 32.5MB, 16.7 million colors



How Would You Cut the Deficit?

Uncle Sam sure could use a hand. Tap into our deficit calculator and see how you would close the federal budget gap. Would you freeze pay for civilian employees? Raise Part B Medicare premiums? How about increase the gas tax? The choices are all yours.
aarp.org/deficitcalculator

AARPOne

MARK REEDER/PHOTON

We can clean, repair and modify scans.

600DPI, 1.3MB, 4 grays

Note: tear repaired using GraphicConverter

**How
Would You
Cut the
Deficit?**

Uncle Sam sure could use a hand. Tap into our deficit calculator and see how you would close the federal budget gap. Would you freeze pay for civilian employees? Raise Part B Medicare premiums? How about increase the gas tax? The choices are all yours.
aarp.org/deficitcalculator

AARPOne

13

You can stitch pieces together to make a copy of a large page.

IMPORTANT! Save This Information

A soft copy (PDF) of the User Manual is available found pre-loaded on certain products or on 1 tech support site at <http://support.wdc.com>. Should you encounter any problem, please give us an opportunity to address it before returning this product. Most technical support questions can be answered through our knowledge base or e-mail support service at <http://support.wdc.com>. If the answer is not available or, if you prefer, please contact WD at the best telephone number shown above. Your product includes 30 days of free telephone support during the warranty period. This 30-day period starts on the date of your first telephone contact with WD technical support. E-mail support is free for the entire warranty period and our extensive knowledge base is available 24/7. To help us keep you informed of new features and services, remember to register your product online at <http://register.wdc.com>.

is

available on our website at <http://products.wdc.com/updates>, and may also be found pre-loaded on certain products or on the product CD (if supplied). A printed copy may be requested through our tech support site at <http://support.wdc.com>. Should you encounter any problem, please give us an opportunity to address it before returning this product. Most technical support questions can be answered through our knowledge base or e-mail support service at <http://support.wdc.com>. If the answer is not available or, if you prefer, please contact WD at the best telephone number shown above. Your product includes 30 days of free telephone support during the warranty period. This 30-day period starts on the date of your first telephone contact with WD technical support. E-mail support is free for the entire warranty period and our extensive knowledge base is available 24/7. To help us keep you informed of new features and services, remember to register your product online at <http://register.wdc.com>.

<http://products.wdc.com/updates>, and may also be found pre-loaded on certain products or on the product CD (if supplied). A printed copy may be requested through our tech support site at <http://support.wdc.com>. Should you encounter any problem, please give us an opportunity to address it before returning this product. Most technical support questions can be answered through our knowledge base or e-mail support service at <http://support.wdc.com>. If the answer is not available or, if you prefer, please contact WD at the best telephone number shown above. Your product includes 30 days of free telephone support during the warranty period. This 30-day period starts on the date of your first telephone contact with WD technical support. E-mail support is free for the entire warranty period and our extensive knowledge base is available 24/7. To help us keep you informed of new features and services, remember to register your product online at <http://register.wdc.com>.

This was done with the Photomerge Panorama command in Photoshop Elements.

IMPORTANT! Save This Information

A soft copy (PDF) of the User Manual is available found pre-loaded on certain products or on the product CD (if supplied). A printed copy may be requested through our tech support site at <http://support.wdc.com>. Should you encounter any problem, please give us an opportunity to address it before returning this product. Most technical support questions can be answered through our knowledge base or e-mail support service at <http://support.wdc.com>. If the answer is not available or, if you prefer, please contact WD at the best telephone number shown above. Your product includes 30 days of free telephone support during the warranty period. This 30-day period starts on the date of your first telephone contact with WD technical support. E-mail support is free for the entire warranty period and our extensive knowledge base is available 24/7. To help us keep you informed of new features and services, remember to register your product online at <http://register.wdc.com>.

You can make tiny print legible.



i Technical Support and Limited War

North America		Asia Pacific
English	800.ASK.4WDC (800.275.4932)	Australia China Hong Kong India
Spanish	800.832.4778	
Europe (toll free)*	00800 ASK4 WDEU (00800 27549338)	Indonesia Japan Korea Malaysia Philippines Singapore Taiwan
Europe	+31 880062100	
Middle East	+31 880062100	
Africa	+31 880062100	

* Toll free number available in the following countries: Austria, Belgium, Denmark, France, Switzerland, United Kingdom.

IMPORTANT! Save This Information
 A soft copy (PDF) of the User Manual is available on our website found pre-loaded on certain products or on the product CD (if tech support site at <http://support.wdc.com>. Should you enc address it before returning this product. Most technical supp base or e-mail support service at <http://support.wdc.com>. If t WD at the best telephone number shown above.
 Your product includes 30 days of free telephone support durir date of your first telephone contact with WD technical support our extensive knowledge base is available 24/7. To help us ke to register your product online at <http://register.wdc.com>.

Optical Character Recognition (OCR)

- ⊗ Most scanner software will do OCR.
- ⊗ Output is relative to the quality of the scan.
- ⊗ If the picture is jagged the OCR may not be very good.
- ⊗ Handwriting is very unreliable.
- ⊗ Small print needs more dots per inch(DPI) to get reliable character recognition.

Scans at different resolutions.

150 DPI

Morningside

Scans at different resolutions.

300 DPI

Morningside

Scans at different resolutions.

1200 DPI

Morningside

Fuzzy is not good either.

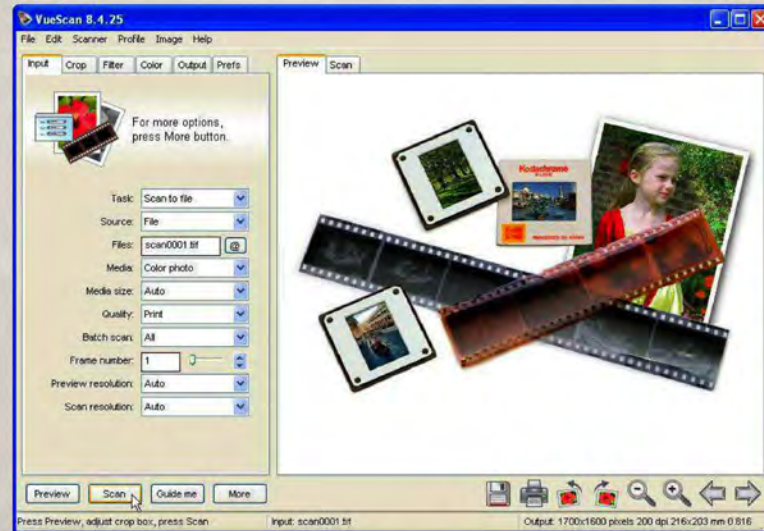
IMPORTANT! Save This Information
A soft copy (PDF) of the User Manual is available
found pre-loaded on certain products or on the
tech support site at <http://support.wdc.com>.

IMPORTANT! Save This Information
A soft copy (PDF) of the User Manual is available
on our website at <http://product.wdc.com/updates>.
and may
be found on the product or on the
product CD (if applicable). A soft copy of the User Manual may be found on our
tech support site at <http://support.wdc.com>.

CONVERT SCANS TO PDF

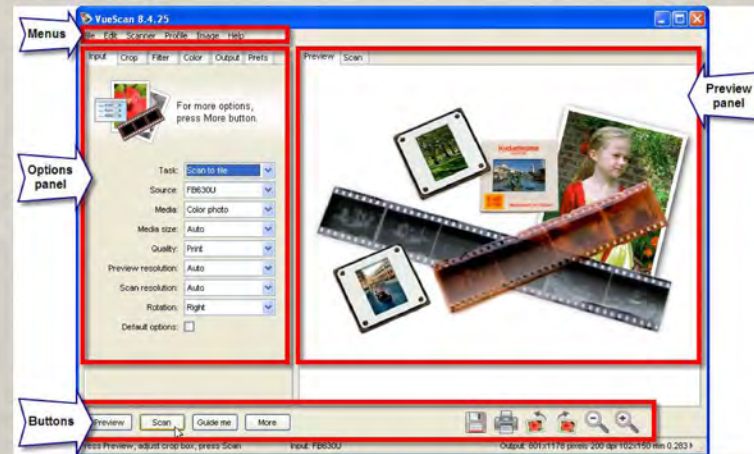
- Produces searchable text.
- PDFs are transportable.
- Takes much less space.
 - For example:
 - A 2400 DPI page takes 470MB.
 - A PDF of it only takes 61KB.
 - That's less than 0.02%.

VUESCAN



VUESCAN

<http://hamrick.com/>



VUESCAN

<http://hamrick.com/>

- Common tasks
 - Scanning many photographs in a batch
 - Scanning to a multi-page PDF file
 - Turn VueScan into a 'photocopier'
 - Saving files
 - Choosing different resolutions

VUESCAN

<http://hamrick.com/>

VueScan is one of the world's most widely used software interfaces for digitizing film and prints on flatbed and film scanners. This powerful yet affordable program supports over 1,600 scanners and more than 300 digital camera RAW and scan RAW file types. It is the only scanning program that supports Mac OS X, Windows, and Linux.

\$39.95/Year or \$79.95 unlimited

VUESCAN

<http://hamrick.com/>

SASCHA STEINHOFF

The VueScan Bible

Everything You Need to Know for Perfect
Scanning

176 page book, \$20 to \$40.

Readiris 12

<http://www.irislink.com>

Readiris 12 is a text recognition software that performs all your tedious retyping work in no time. Simply scan any document with your scanner, recognize it with Readiris 12 and within seconds you have a fully editable copy of your paper document in your favourite word processor, spreadsheet application or in one of the many available output application. Readiris 12 works with scanned paper documents, PDF files and image files.

Readiris 12

<http://www.irislink.com>

I like it because I can select areas to OCR and ignore others like graphics.

Comes with a Drop-On utility (Drop2Read) which allows quick scanning of simple documents.



Readiris 12

<http://www.irislink.com>

\$129 or less, free or discounted with some scanners.

<http://www.irislink.com/c2-1584-189/Readiris-12>